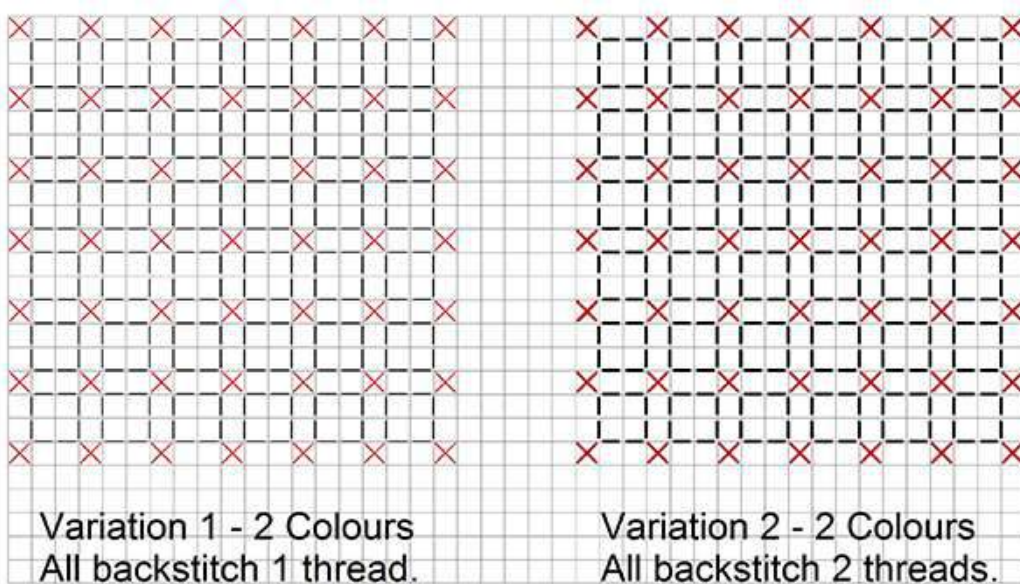
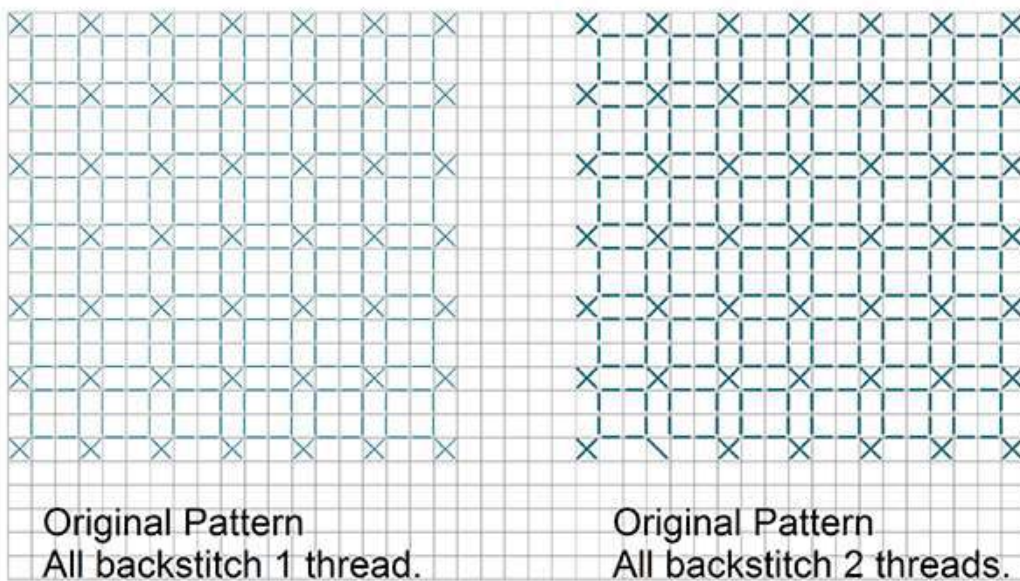


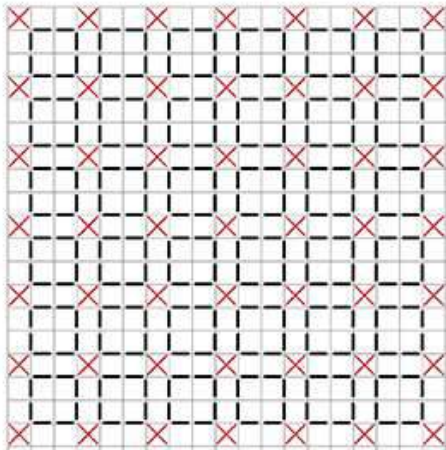
Blackwork Filler Patterns Variations

Blackwork Filler Patterns can be as simple, as complex or anywhere in between those two extremes as you would like them to be.

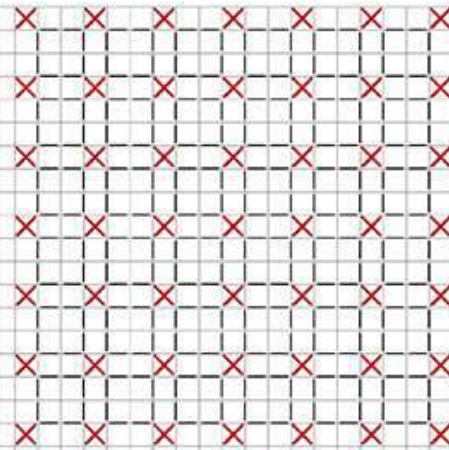
You can also take one 'Filler Pattern' and vary that pattern in a myriad of ways to create varying effects.

The following illustrates a fairly straight forward filler pattern with some simple ways to vary that pattern. I have made some notations on the various illustrations to clarify the amendments. These variations are by no way the only way a pattern can be varied but I hope it gives you at least a starting point as to how you can vary a filler pattern.

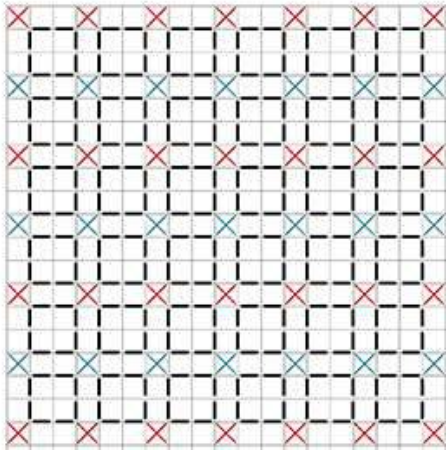




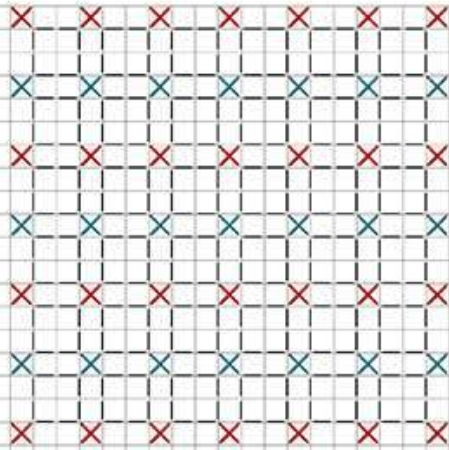
Variation 3 - 2 Colours
Red - 1 thread. Black - 2 threads.



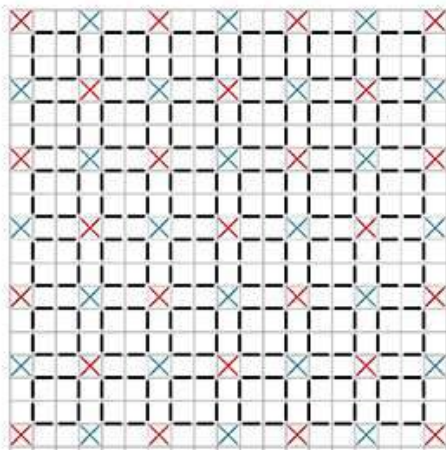
Variation 4 - 2 Colours
Red - 2 threads. Black - 1 thread.



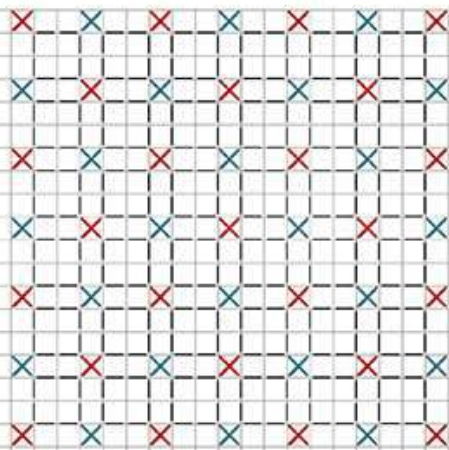
Variation 5 - As for variation 3 but change alternate horizontal rows of cross to teal.



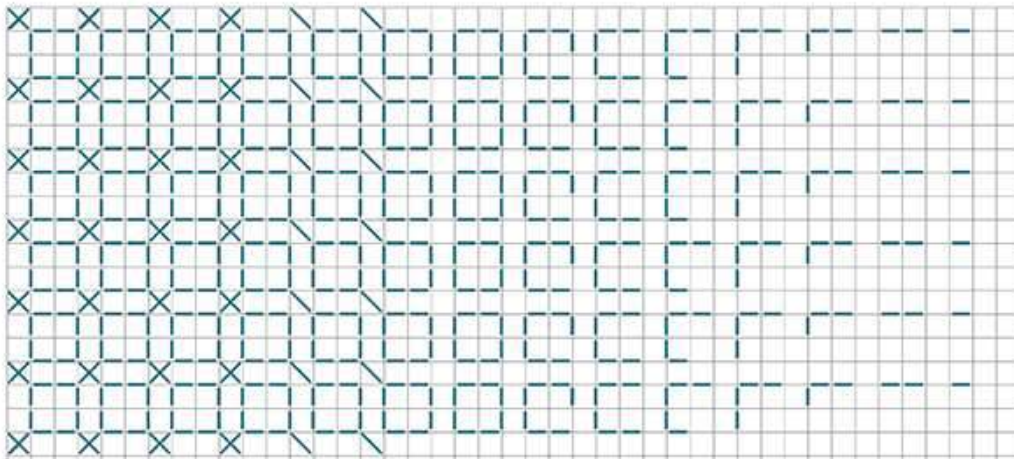
Variation 6 - As for variation 5 but reverse weighting of threads.



Variation 7 - As for variation 3 but change alternate diagonal rows of cross to teal.



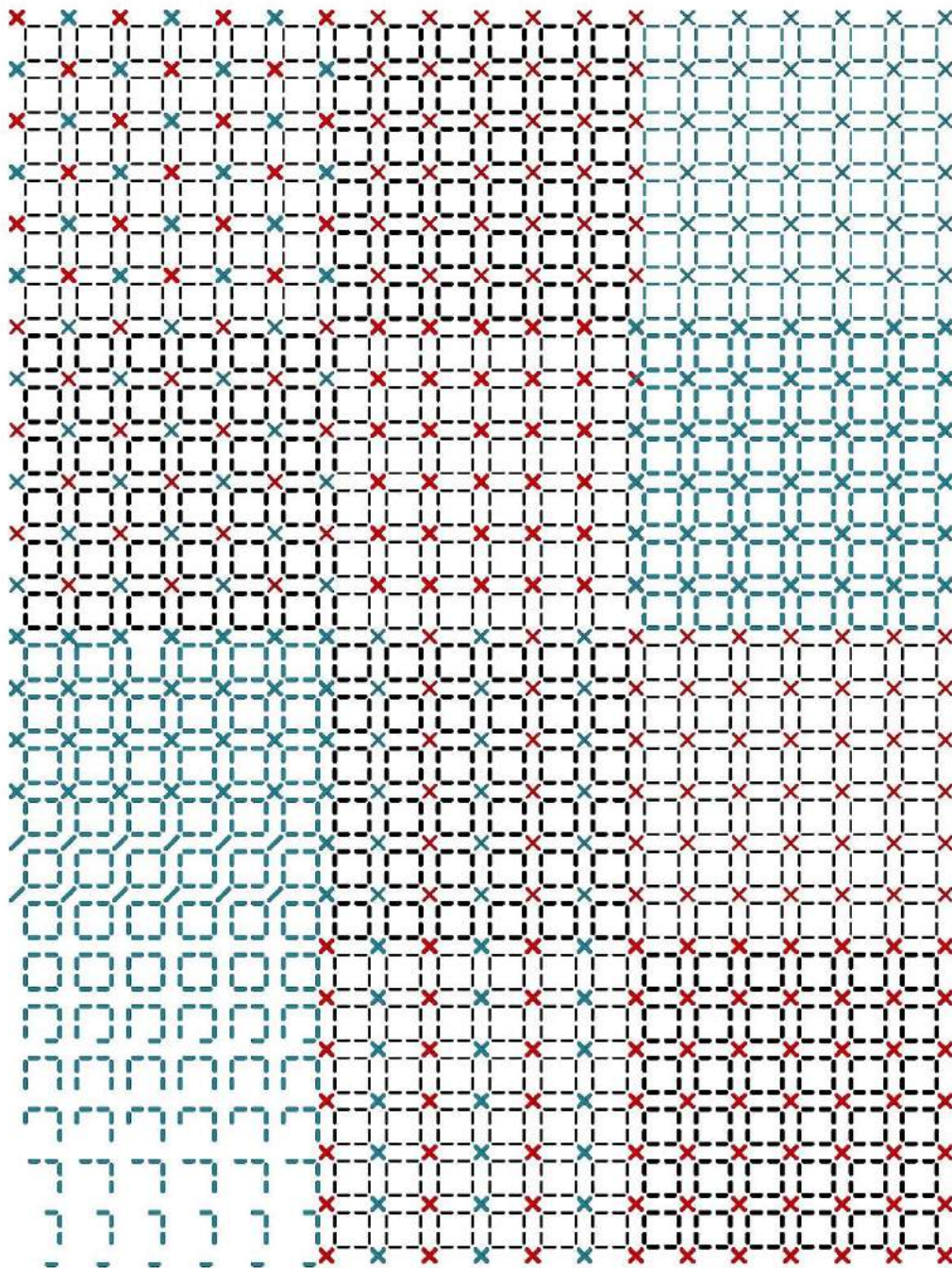
Variation 8 - As for variation 7 but reverse weighting of threads.



"Fading the pattern out" - Work pattern in entirety to establish pattern. Progressively remove various 'components' of the pattern to fade to pattern to required variation.

The following image shows all the above variations, literally, side by side and without the grid.

It is not intended to be a pattern. Its' purpose is to simply illustrate all the variations together so that it is easier to see how subtle changes can change the overall look of the same pattern.



Please feel free to print this document for your own personal use and reference only. Thank you for respecting the time and effort that goes into putting these documents together 😊